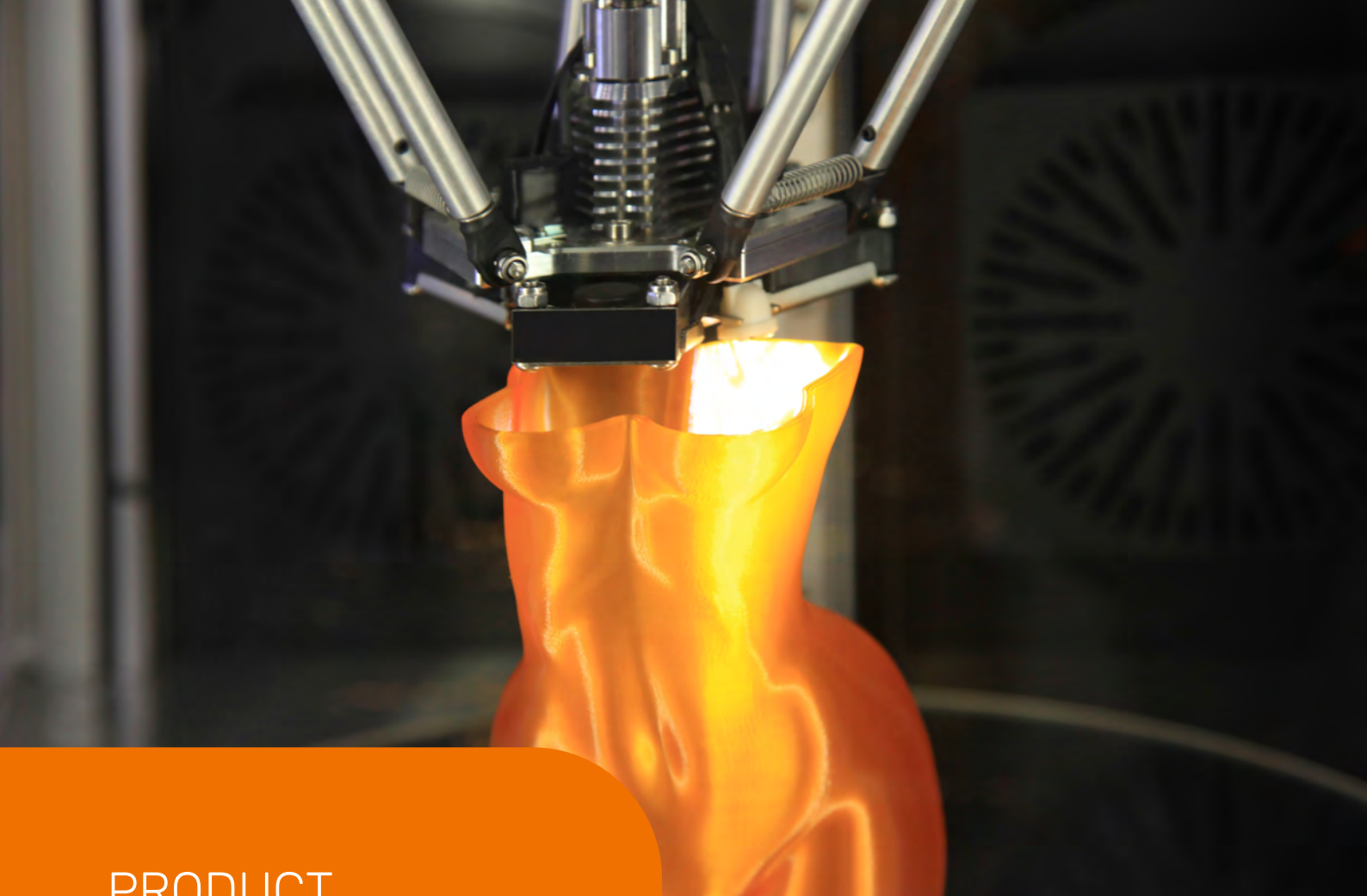


RoHS



PRODUCT CATALOGUE

Our products: It is developed professionally, passed through certification processes and prepared in accordance with quality standards.

www.ccfilament.com

20
20

CCF Filament is designed for the year 2020 in the sector and shows its promotion as a company related to filament products. In particular, developing filament production is at the service of leading companies.





Welcome to our Product Catalogue

About Us

CCF Filament team passionate about 3D printing. We produce the very best 3D printing materials by controlling every stage of production. With a diverse portfolio of materials ranging from high performance plastics to unique aesthetic solutions, CCF Filament will continue to add cutting edge materials to its ever-growing portfolio.

CCF Filament covers the most popular 3D printing materials to meet your everyday needs in design and prototyping.

Our warranty is reviewed with all the necessary certificates.

Our Vision

Our mission is to create the best in class when it comes to 3D printing materials. We believe that materials are the enabling factor which will realise 3D printing as a final production tool. Our high performance materials offer solutions that will develop 3D printing into a mainstream manufacturing method.

3D PRINTING FILAMENT SERIES

(Filament Specification: 1.75 mm / 2.85 mm)

Filament Type	Print Temp (C)	Bed Temp (C)	Density (g/cm ³)	Distortion Temp. C 66 psi (0.45 MPa)	Melt Flow Index (g/10 min)	Tensile Strength (Mpa)	T.Elongation Break (%)	Flexural Modulus (Mpa)	IZOD Impact (J/m ²)
PLA	190-210	50-70	1.24	55	6	53	6	3.8	16
ABS	230-260	100-110	1.03	81	6	57	45	1.7	34
PETG	225-245	70-90	1.27	77	-	51	5	2.1	12
TPU	220-240	40-50	1.20	74	22	-	-	-	-
ASA	245-270	100-110	1.06	72	17	47	18	2.1	11

3D Printer (Suitable for all FDM 3D Printers)

Available Color Options



White Gray Black Yellow Orange Red Blue Emerald Purple



Water Green Gold Silver Turquoise Natural Granite Military Green Silver White Bronze



Bone Color Copper Transparent Green Transparent Purple



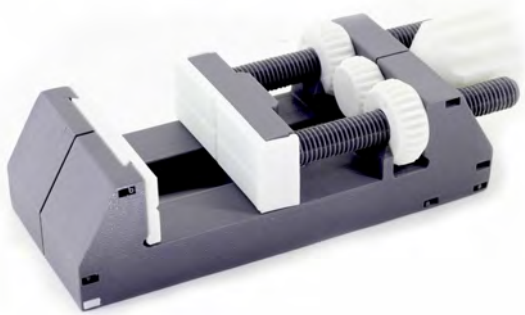
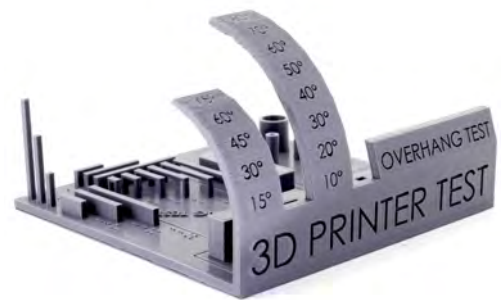
PLA

Product Features

Non harmful, non-toxic, and environment friendly
 Good material toughness, good strength; Suitable for complex models; Low material shrinkage rate, uniform diameter.

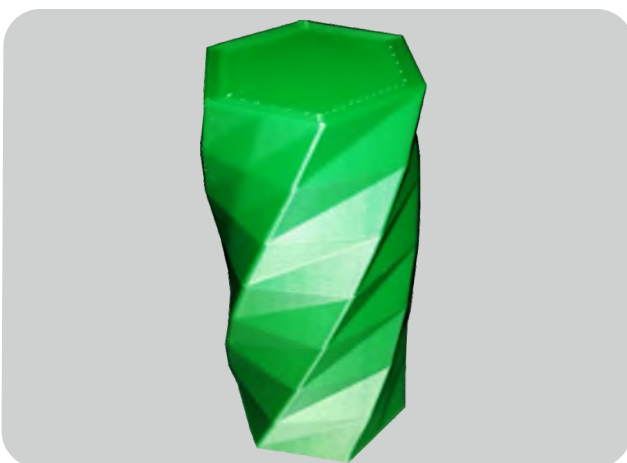
High Surface Quality

Compared to other filaments, because of its high crystalline structure can be printed faster. This feature makes it possible to print with high surface quality. In addition, it ensures trouble-free production of complex parts down to the smallest details.



High Mechanical Properties

Since PLA raw material with the highest molecule weight distribution is used, CCF PLA filaments have high tensile and impact strength. It provides convenience in the production of functional parts.



PLA +

Product Features

Extracted and purified from corn grain; High rigidity
 good glossiness and transparency; Suitable for printing larger models; Toughness is 10 times more than the PLA on the market. No wire drawing problems the surface of the printouts will be smoother and more delicate No cracking problem.



ABS

Product Features

CCF ABS is made with a specialty bulk-polymerized ABS resin, which has significantly lower volatile content compared to traditional ABS resins. It delivers excellent printing quality with minimal odor during printing.

High Print Quality

Its high fluidity structure ensures that each layer adheres well to each other during printing. It shows lower shrinkage behavior with less orientation of polymer chains.



High Mechanical Properties

Since ABS raw material with the highest molecule weight distribution is used, CCF filaments have high tensile and impact strength. It provides convenience in the production of functional parts.



ABS +

Product Features

With good melt mobility and smooth printing;
with high toughness, hardness and rigidity;
With good heat resistance and oil resistance



ASA

Product Features

CCF filaments with its specially developed formulation for outdoor applications;

- * High UV and impact resistance
- * Low shrinkage,
- * Possession of high print quality.

Suitable for Outdoor Environment

Because of its UV Stability, ASA is an ideal choice for outdoor application. Although it remains in external environments long time. It maintains its toughness and strength under load. Even if it is exposed to the sun, yellowing does not occur on its surface. It is suitable for surface polishing with acetone.



ASA Usage Features

- * Suitable for outdoor environment with UV resistance
- * Detailed parts can be printed without threading
- * Glossy surfaces are obtained with acetone
- * High temperature resistance
- * High impact resistance and wear resistance
- * Easy to sand* Supports are easy to separate



HIPS

Product Features

Soluble support materials and soluble in Limonence
With little water absorption, easy to preverse;
Good toughness.



TPU FLEX

Product Features

CCF TPU Flex Filaments are specially formulated for easy printing.

- * High chemical resistance,
- * High toughness,
- * They have ShoreA 90 flexibility. Both direct-drive and bowden type extruders can be used for printing.

High Surface Quality

Excellent due to the very good layer adhesion allows you to get surface quality prints. Parts printed with TPU (shoreA 90) Flex Filaments allows you to receive. Perfect surface at the right temperatures and speeds results.



High Physical Property

ShoreA 90 flexibility value is specially designed for 3D printing has been selected. Optimum flexibility in printer use fixation provided by ShoreA 90 flexible filaments has been made. (ShoreA 90 flexibility value is applied to silicone phone cases. Can be expressed as a close flexibility).



PETG

Product Features

CCF PETG offers better mechanical properties than any other regular PETG making it a good candidate for a wide range of applications.

No smelling and non-toxic when printing, Good toughness, high transparency and good gloss.

Application

Toys, electronic products, stationery, cosmetics..



Address

Fevzi akmak Mah. 10540. Sk. No: 8
Karatay / KONYA / TURKEY

Phone

Phone Number : +90 332 342 79 20
Export Department (Whatsapp) : +90 532 520 79 05

Online

Email : export@ccfilament.com

Website : www.ccfilament.com



Kasa Yazılım Plastik Tarım Paz. San. ve Tic. Ltd. Őti.